

<b>Meeting:</b>	<b>Safer Bromley Partnership Strategic Group</b>
<b>Date:</b>	<b>15<sup>th</sup> December 2011</b>
<b>Subject:</b>	<b>Performance Review 2011/2012</b>
<b>Author:</b>	<b>Pratheepan Jeyapragasam, Crime Analyst</b> pratheepan.jeyapragasam@bromley.gov.uk

## 1 SUMMARY

- 1.1 This report provides an update in relation to the targets for the Safer Bromley Partnership agreed in July 2011. The report provides the latest performance monitoring data to 30 September 2011 (Quarter 2)

## 2 RECOMMENDATION

- 2.1 The Strategic Group is asked to
- Note the performance information contained within the report.

## 3 BACKGROUND INFORMATION

- 3.3 In light of changes, it was proposed that a new performance monitoring regime is required in order to assess the impact of the Partnership in its objective of making Bromley a Safer place. At the previous meeting of the Partnership, the following Control Strategy Priorities were agreed:

- Crimes against Property
- Violence against Person
- Anti-Social Behaviour
- Public Confidence

- 3.5 These priorities are reflected in the performance framework established by the Metropolitan Police and, as such, it is proposed that these four indicators form the basis of the future performance management regime for the Safer Bromley Partnership. In relation to the first two priorities, it proposed that targets be set against the indicators of reducing Violent Crime and reducing Property Crime. A summary of the “portfolio” of offences and Anti Social Behaviour that are included within these overarching targets are provided at Appendix 1. As agreed in the last meeting, only the following four targets would be reported on at each meeting of the Strategic Group:

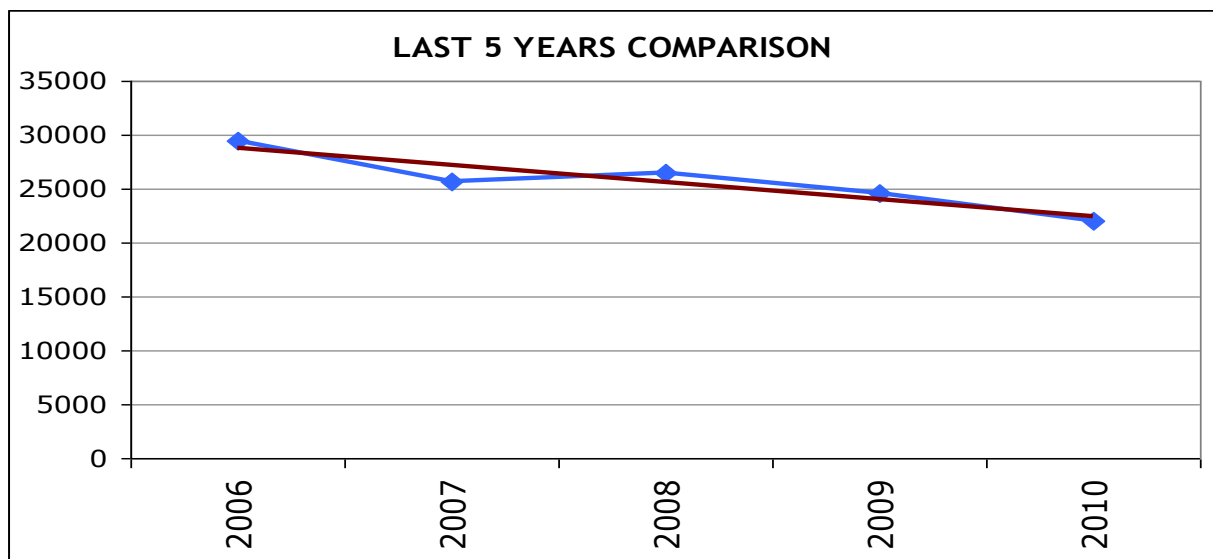
# saferbromley partnership

- Performance Indicator 1*    Reduction in number of violent crimes within Bromley
- Performance Indicator 2*    Reduction in number of property crimes within Bromley
- Performance Indicator 3*    Reduction in levels of recorded Anti Social Behaviour
- Performance Indicator 4*    Increased confidence in the fact that Bromley is a safe place

Reporting on individual crime types and detail of individual operations would only be made as a routine if achievement against set targets was not being made or, in some cases, where the measurable rates of individual offences or types of offending were significantly different from expected trends and predicted patterns etc. The management of these operational level issues would be dealt with outside of the Strategic Group at the combined Police/Partnership Tactical Tasking and Coordination Group chaired by the borough Superintendent.

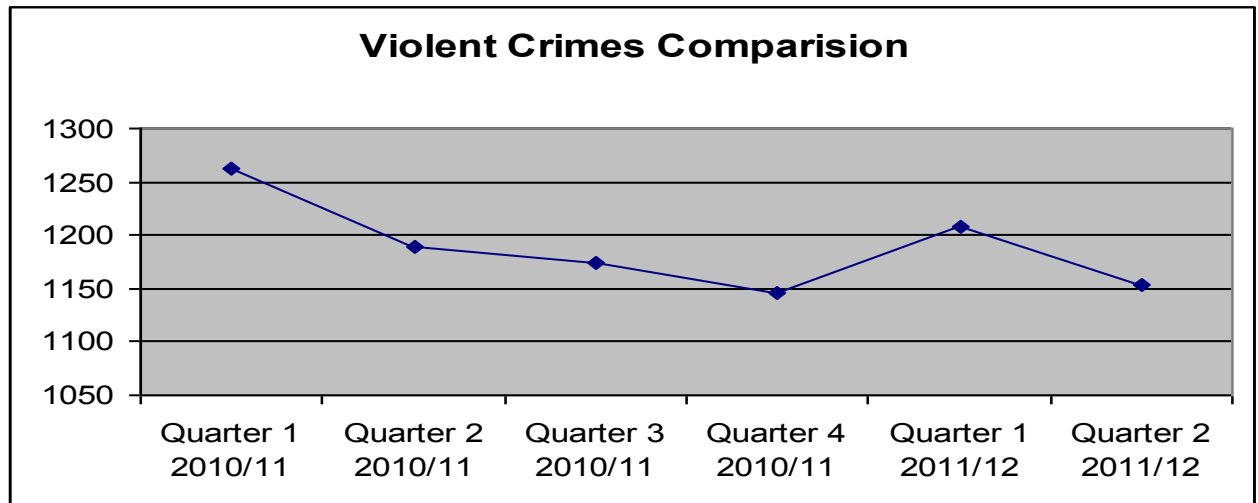
## Performance Review 2011/2012

- 3.6 Significant progress has been made in relation to reducing crime and disorder in Bromley. This is reflected not only in the previous year's performance figures but also over the previous five quarters and the following charts provide an indication of the trends in crime in Bromley over the past five Quarters (July 2010 – September 2011).



## Performance Indicator 1- Reduction in numbers of Violent crimes within Bromley

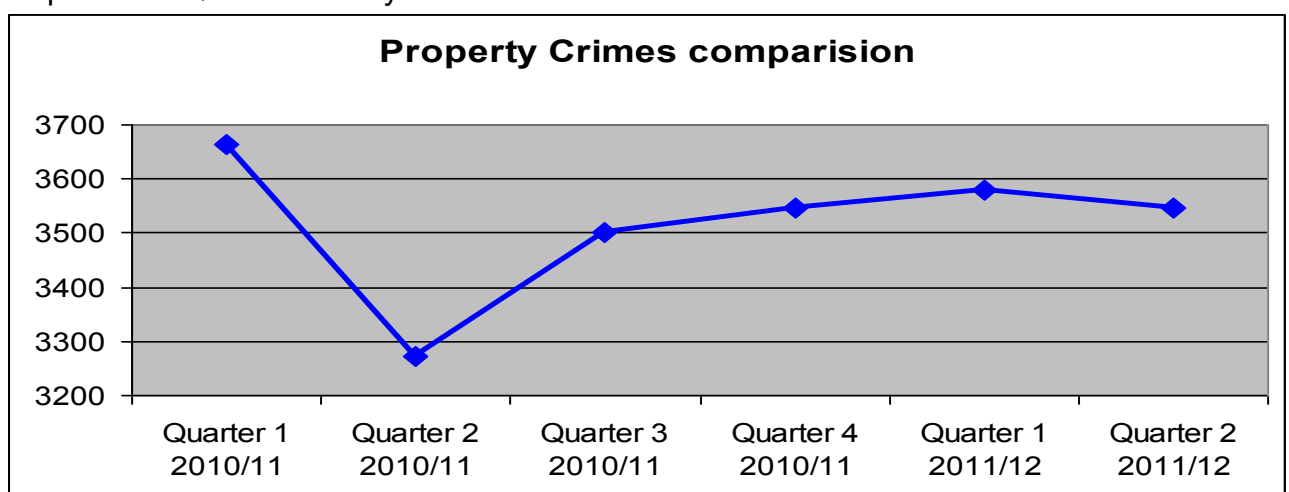
3.6 Offences related to Violent Crimes represent 21% of the Total Notifiable offences in the period of Quarter 2 this year



3.7 During the July 2011 to September 2011 there were 1154 Total Violent Offences reported to the Police, this represented a reduction of 46 offences compared with the same period previous year.

## Performance Indicator 2- Reduction in numbers of Property Crimes within Bromley

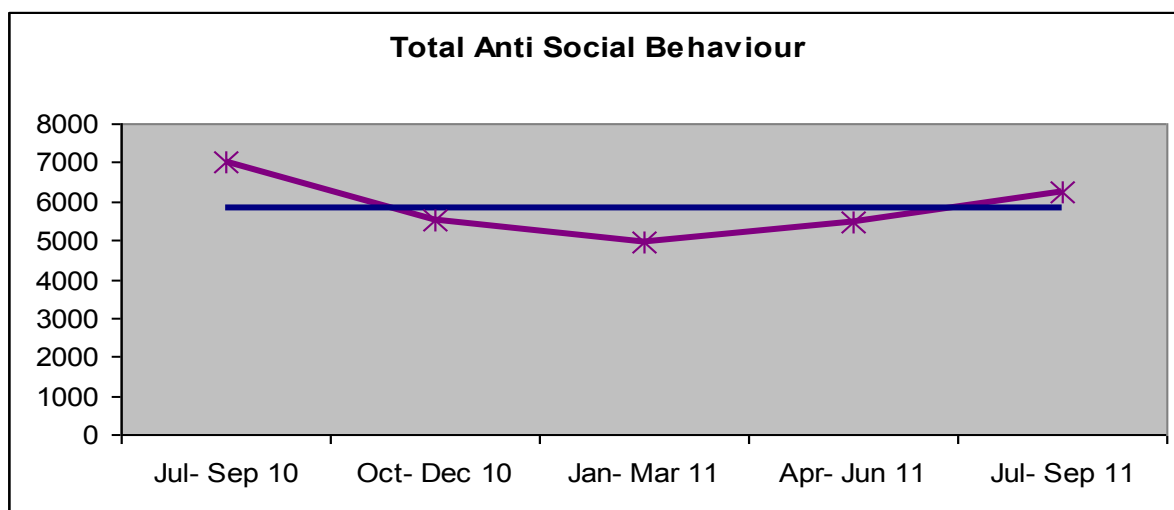
3.8 Total offences to property Crimes represent 65% of the Total Notifiable offences in the period of Quarter 2 this year



3.9 As can be seen from the figure above, the trend does indicate as marked a reduction over the period of Q1 to Q2. From Q3, it does still indicate an increasing level of offences relates to property crimes but there was a decline in numbers in Q2.

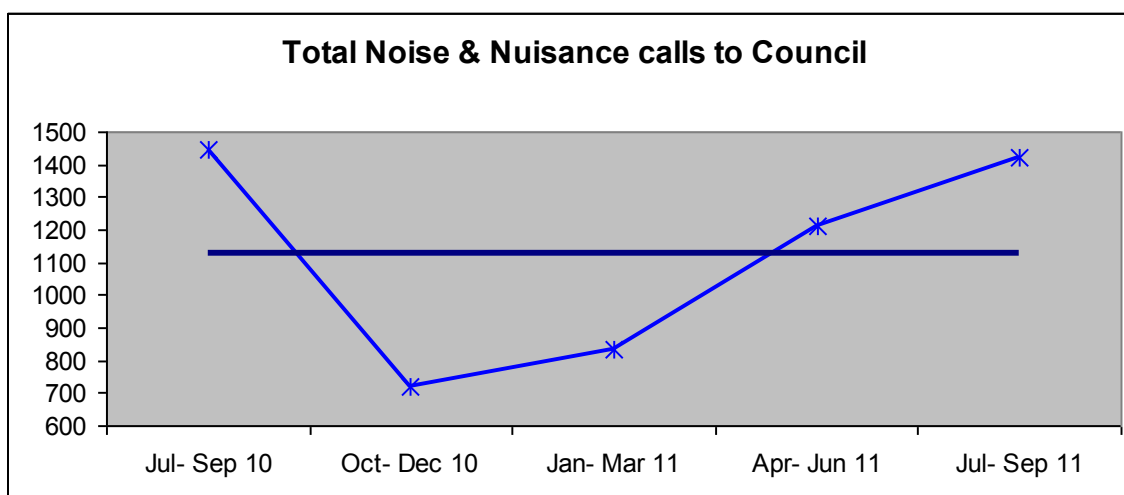
3.10 During the July to September 2011 there were 3545 Total Property related Offences reported to the Police, this represented an increased of 274 offences compared with the same period previous year. This period included the August disorder, which accounts for a large proportion of this increased.

## Anti-Social Behaviour

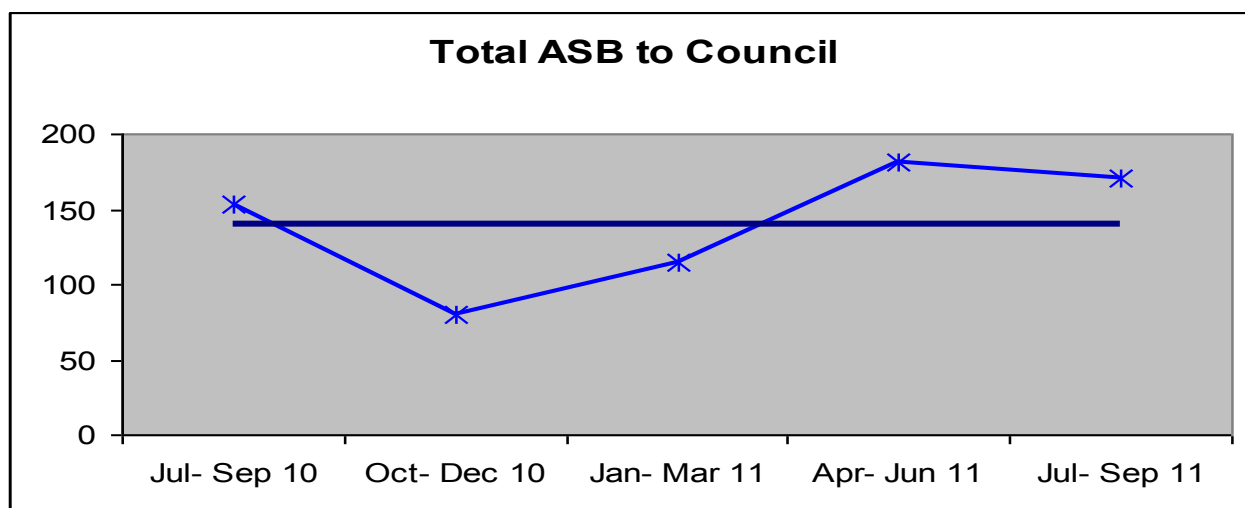


	Jul- Sep 10	Oct- Dec 10	Jan- Mar 11	Apr- Jun 11	Jul – Sep 11
Noise & Nuisance	1444	721	836	1215	1425
ASB to Council	153	80	115	181	171
Fly Tipping Investigation	146	149	143	145	158
ASB to Police	3536	3185	2584	2965	3306
Graffiti	1746	1398	1269	945	1190
<b>Total ABS</b>	<b>7025</b>	<b>5533</b>	<b>4947</b>	<b>5451</b>	<b>6250</b>

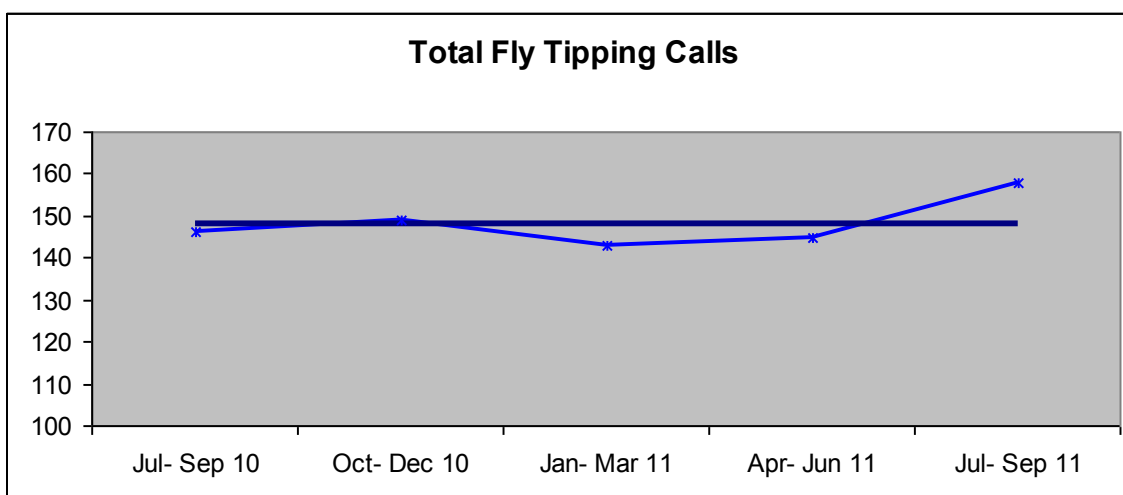
3.11 During the reporting period, the borough has experienced a reduction of 775 (11%) incidents of ASB reported when compared with the same period last year.



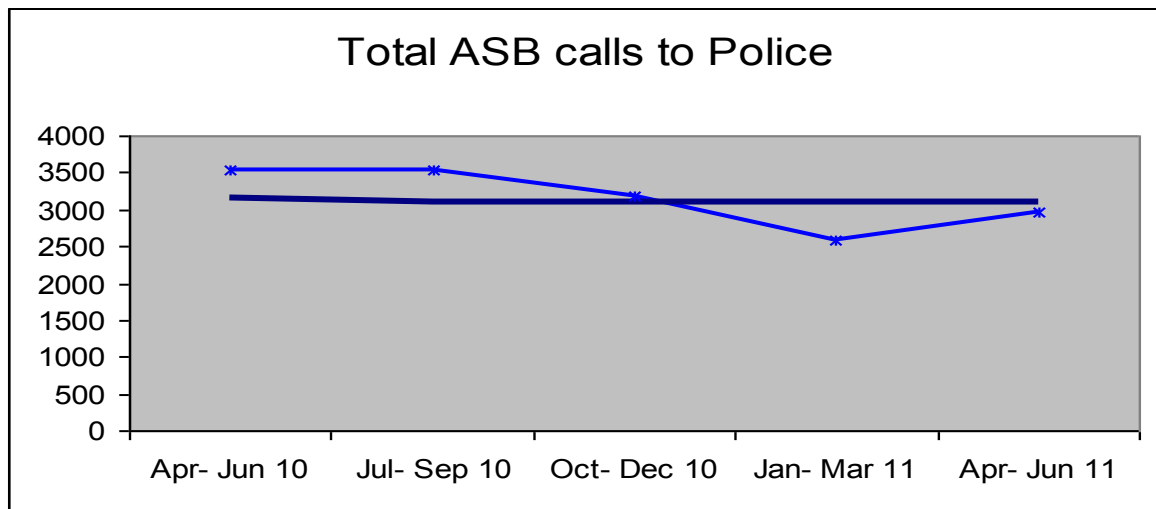
3.12 As can be seen from the figure above, during the reporting period, the borough has experienced a reduction of 19 incidents of Noise and Nuisance ASB reported when compared with the same period last year.



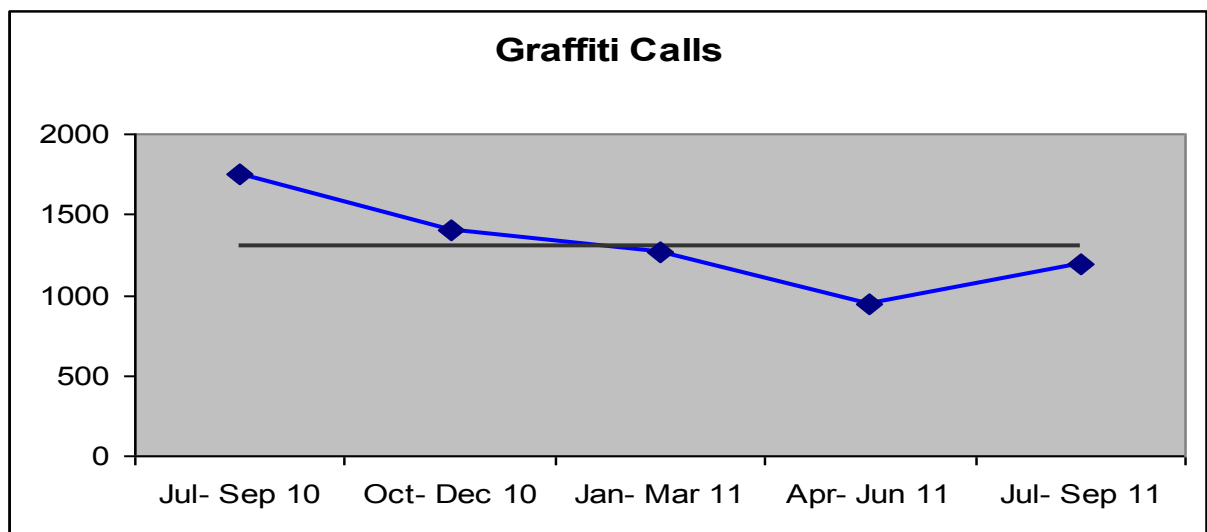
3.13 July to September 2011 the borough has experienced an increase of 18 incidents of ASB reported when compared with the same period last year. As have been introduced the Matrix reporting system for ASB at a higher level and targeting the most vulnerable. This is leading to an increase in referrals from Housing Associations, Police and Local Authority. In addition the Earn your travel back also lead to an increase. As the Matrix system is adopted by more agencies then there will be an increase in referrals. As the public become more aware of us they will report more.



3.14 As can be seen from the figure above, during the reporting period, the borough has experienced an increase of 12 incidents of Fly Tipping ASB reported when compared with the same period last year.



3.15 This reporting period a reduction of 230 incidents reported to police regarding ASB compare with the same period last year.



3.16 As can be seen from the figure above, during the reporting period, the borough has experienced a reduction of 556 incidents of Graffiti ASB reported when compared with the same period last year. This could be for a number of reasons, increase community engagement, street friends taking a stronger role in the community, more PCSO on the street any of these could lead to less reports of graffiti being made.

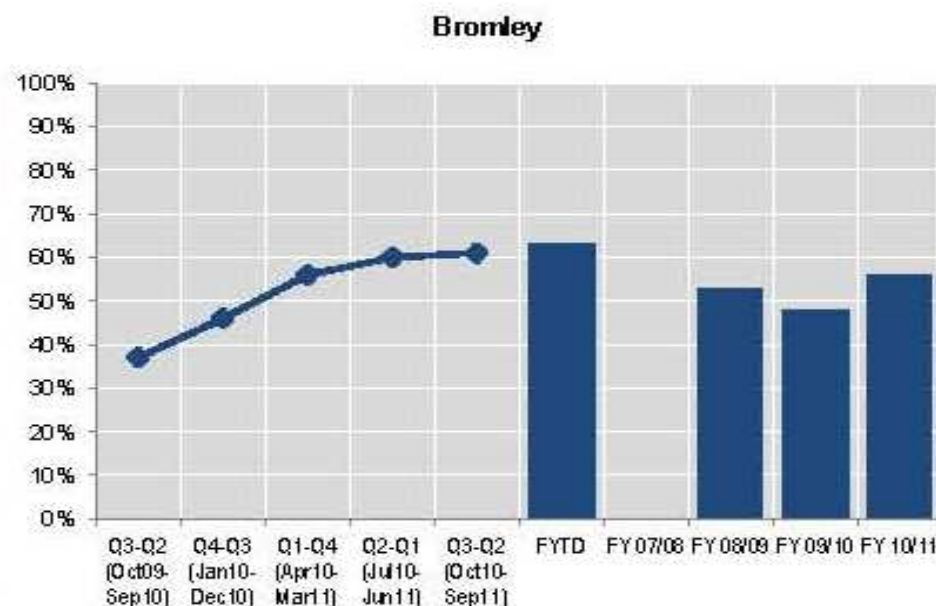
## Increased confidence in the fact that Bromley is a safe place

**Q74AB: To what extent do you agree that the police and local council are dealing with the ASB and crime issues that matter in this area? Base: all respondents**

Difference from previous quarter  
[Borough]: +1%

Difference from same quarter in 2011/12  
[Borough]: +24%

% agree (strongly/tend to)	Bromley			MPS
	%	Base	Confidence interval	%
Q3-Q2 (Oct09-Sep10)	37%	640	±3.74%	49%
Q4-Q3 (Jan10-Dec10)	46%	640	±3.86%	50%
Q1-Q4 (Apr10-Mar11)	56%	640	±3.85%	51%
Q2-Q1 (Jul10-Jun11)	60%	581	±3.98%	51%
Q3-Q2 (Oct10-Sep11)	61%	521	±4.19%	52%
Financial Year to Date	63%	201	±6.67%	52%
FY 07/08	NA	0	NA	NA
FY 08/09	53%	640	±3.87%	52%
FY 09/10	48%	640	±3.87%	46%
FY 10/11	56%	640	±3.85%	51%



## Promoting public safety: Proxy SPI10b Perceptions of ASB

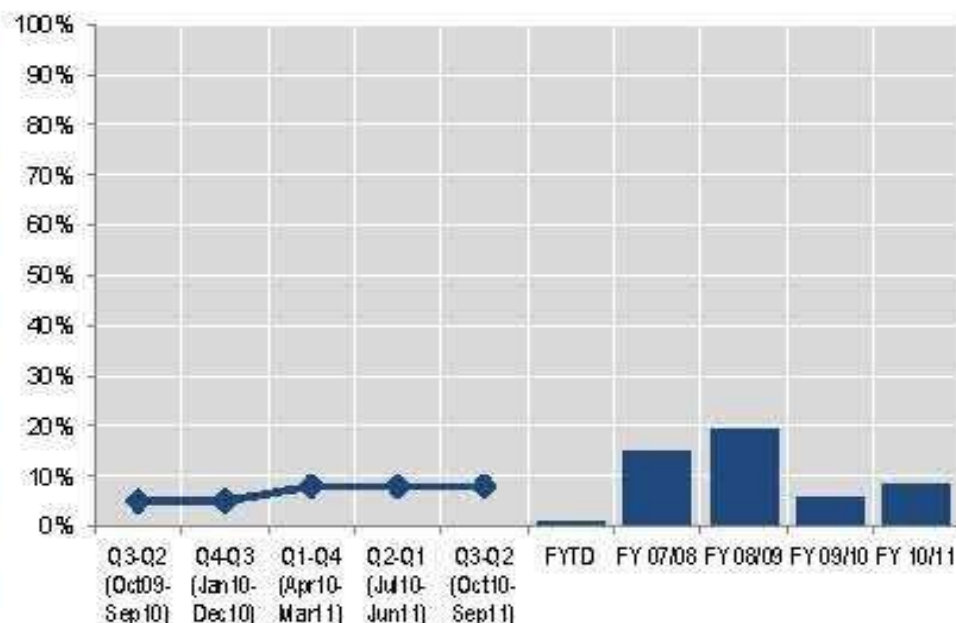
Q10A-G [composite]: Perceptions of ASB Base: all respondents, excluding those indicating 'don't know' to any of the seven composite factors

Difference from previous quarter [Borough]: ±0%

Difference from same quarter in 2011/12 [Borough] +3%

% high level of worry	Bromley			MPS
	%	Base	Confidence interval	%
Q3-Q2 (Oct09-Sep10)	5%	473	±1.96%	12%
Q4-Q3 (Jan10-Dec10)	5%	497	±1.92%	12%
Q1-Q4 (Apr10-Mar11)	8%	551	±2.27%	12%
Q2-Q1 (Jul10-Jun11)	8%	525	±2.32%	11%
Q3-Q2 (Oct10-Sep11)	8%	479	±2.43%	11%
Financial Year to Date	1%	186	±1.43%	10%
FY 07/08	15%	489	±3.15%	18%
FY 08/09	19%	505	±3.44%	23%
FY 09/10	5%	488	±2.02%	13%
FY 10/11	8%	551	±2.29%	12%

Bromley





## Q15: To what extent are you worried about ASB in the area?

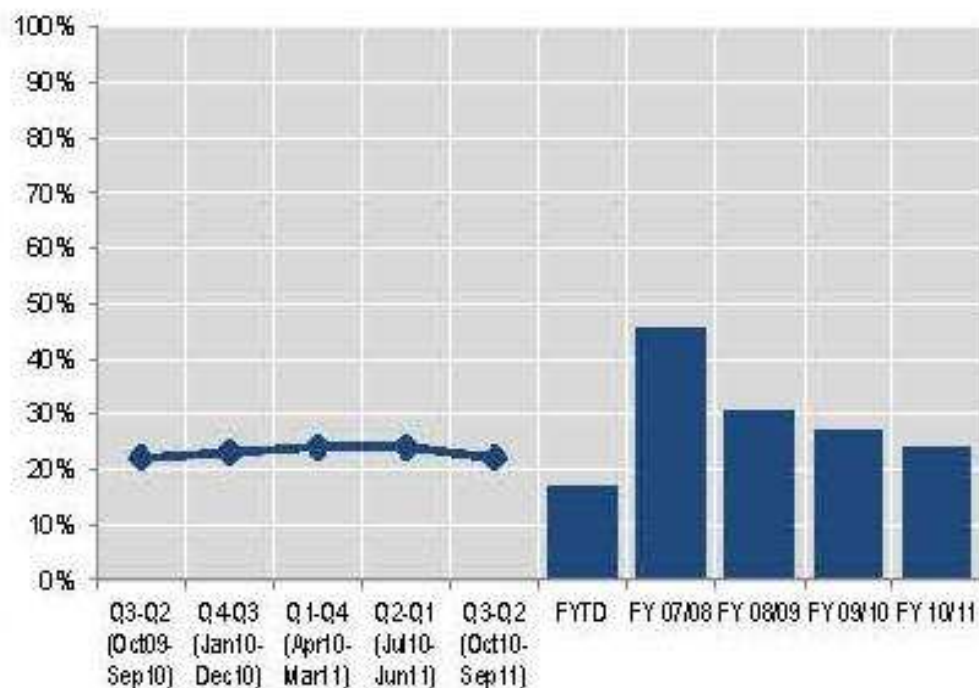
Base: all respondents, excluding 'don't know'

Difference from  
previous quarter  
[Borough]: -2%

Difference from same  
quarter in 2011/12  
[Borough] ±0%

% worried (very/fairly)	Bromley			MPS
	%	Base	Confidence interval	%
Q3-Q2 (Oct09-Sep10)	22%	638	±3.21%	25%
Q4-Q3 (Jan10-Dec10)	23%	638	±3.27%	25%
Q1-Q4 (Apr10-Mar11)	24%	638	±3.31%	25%
Q2-Q1 (Jul10-Jun11)	24%	581	±3.47%	26%
Q3-Q2 (Oct10-Sep11)	22%	520	±3.56%	25%
Financial Year to Date	17%	200	±5.21%	27%
FY 07/08	45%	639	±3.86%	40%
FY 08/09	31%	634	±3.59%	39%
FY 09/10	27%	640	±3.43%	25%
FY 10/11	24%	638	±3.32%	25%

Bromley



## APPENDIX 1

### Performance Indicator Portfolios:

<b>Violence Portfolio</b>	
<b>Offences</b>	<b>Supporting Measures</b>
Violence with Injury	Domestic Violence
Common Assault	Domestic Violence Sanction Detection Rate
Harassment	Domestic Violence Arrest Rate
Threats/ Conspiracy to Kill	Serious Youth Violence
Blackmail	Knife Enabled Crime
Kidnapping/ False Imprisonment	Knife Enabled Crime Sanctioned Det. Rate
	Gun Crime
	Gun Crime Sanctioned Det. Rate
	Most Serious Violence
	Most Serious Violence Sanctioned Det. Rate

<b>Property Portfolio</b>
<b>Offences:</b>
Personal Robbery
Commercial Robbery
Total Robbery
Residential Burglary
Non-Residential Burglary
Theft/Taking Motor Vehicles
Theft From Motor Vehicles
Theft From Shops
Theft From Person
Theft of Pedal Cycles
Other Theft
Criminal Damage

<b>Anti Social Behaviour Portfolio</b>
<b>ASB:</b>
Noise & Nuisance
ASB to Council
Fly Tipping
ASB to Police
Graffiti